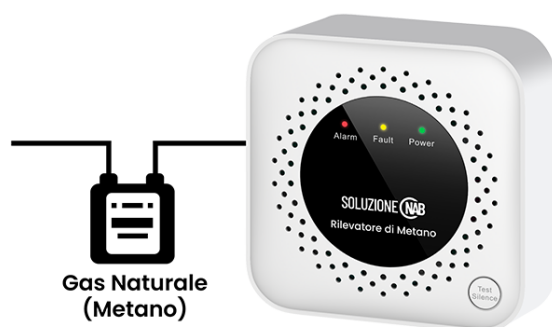


Natural Gas Alarm (Methane)



- High-performance sensor, intelligent and accurate detection of gas leakage, and send out alarm signal timely
- Operate stably and identify gas type effectively
- Intelligent linkage to close pipeline valve and start exhausting fan
- A built-in high-volume buzzer, 70dB (A) at 1m (3.28 feet)
- Three indicator lights for displaying device status clearly

System Overview

The Natural Gas Alarm is designed to continuously monitor methane concentration. Adopting a catalytic-type gas sensor, advanced electrical technology, MCU, a built-in high-volume buzzer, it responds quickly and becomes highly sensitive with stable performance and low false alarm. Once the surrounding methane concentration reaches the alarm threshold, it will promptly send out visual and audible alarm signal to remind the user to take immediate measures. The exhausting fan can be linked to the relay output port to send out combustible gas. The device can also close the pipeline valve to cut off the gas source.

Functions

Precise detection

A catalytic-type gas sensor is used for precise detection, stable performance and long-term operation. Alarm Threshold is 10% LEL.

Intelligent linkage

After alarm, it can automatically close the valve or turn on the exhausting fan, and address the leakage in time.

Clear indication

It has three LED indicators to display the working status of the device.

Scene

Application scenarios include homes, restaurants, hotels and other places that require methane detection.

Technical Specification

Gas Type	Methane (CH ₄)
Alarm Threshold	10% LEL
Response Time	≤30 s
Supply Voltage	DC12V
Power Consumption	≤0.8W
Output	1 valve output, 1 relay output
Operating Temperature	-10°C to +55°C (+14°F to +131°F)
Relative Humidity	≤95% RH (non condensing)
Warm-up Period	180 s
Alarm Method	Visual and audible alarm
Alarm Sound Output	70dB (A) at 1m (3.28 feet)
Silence	Support
Dimensions	86.6 mm × 86.6 mm × 29.2 mm (3.41" × 3.41" × 1.15")
Installation	Wall mount
Certification	CE

Ordering Information

Type	Description
Gas Alarm	Natural Gas Alarm (Methane)

Installation

Wall Mount



Dimensions (mm/inch)

